

## coral® classic FR

First impressions are crucial, which is why effective entrance flooring that stops dirt and moisture being tracked into carriages and saloon areas is fundamental to modern train design.

Research shows that taking just two steps on Coral Classic's moisture absorbing yarns is enough to absorb half of the foot-borne moisture that would otherwise be carried inside on the soles of people's shoes.



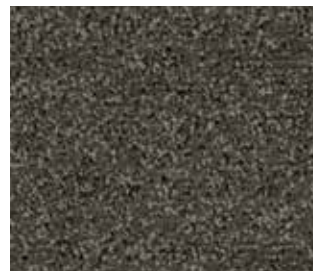
4751FR | silver grey

LRV 9



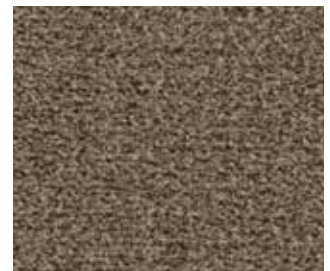
4758FR | olive

LRV 7



4764FR | taupe

LRV 6



4774FR | khaki

LRV 11



4721 | mouse grey

LRV 4



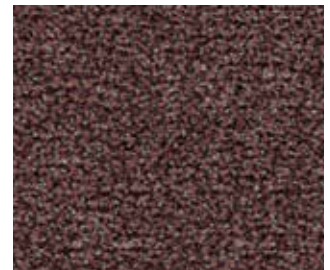
4701FR | anthracite

LRV 6



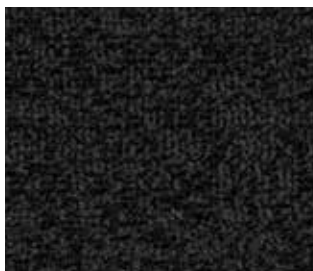
4744FR | espresso

LRV 4



4759FR | old rose

LRV 6



4756FR | bronzetone

LRV 2



4730FR | raven black

LRV 2



4727FR | navy blue

LRV 2



4753FR | bright red

LRV 5



4750FR | warm black

LRV 4

**For rail please ensure that FR is clearly noted on all orders**

creating better environments



FLOORING SYSTEMS

## coral® brush FR

First impressions are crucial, which is why effective entrance flooring that stops dirt and moisture being tracked into carriages and saloon areas is fundamental to modern train design.

Coral Brush is suitable for all types of entrance areas, absorbing moisture and removing dry soiling as the weather demands.



5714FR | shark grey LRV 5



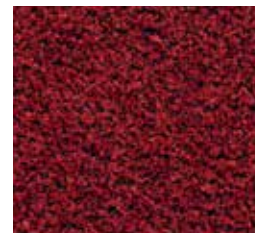
5716FR | masala brown LRV 5



5764FR | petrified grey\* LRV 5



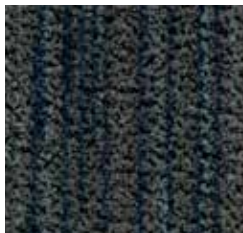
5754FR | straw brown\* LRV 11



5723FR | cardinal red LRV 2



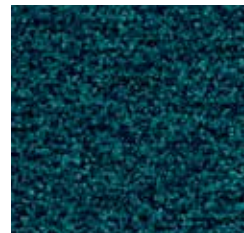
5710FR | asphalt grey LRV 2



5767FR | slate blue\* LRV 3



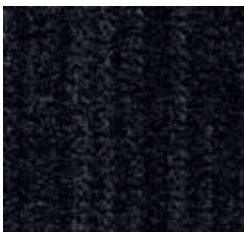
5721FR | hurricane grey LRV 3



5705FR | Bondi blue LRV 4



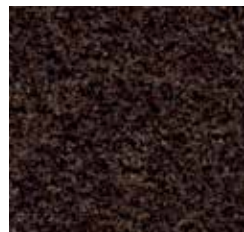
5706FR | brick red LRV 2



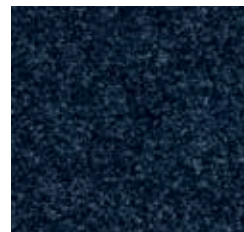
5750FR | aztec black\* LRV 1



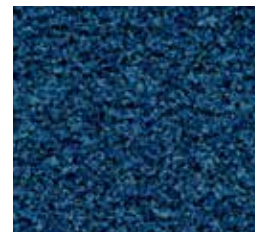
5741FR | cannon grey\* LRV 2



5724FR | chocolate brown LRV 2



5727FR | stratos blue LRV 2



5722FR | cornflower blue LRV 4



5730FR | vulcan black LRV 1



5715FR | charcoal grey LRV 2



5709FR | royal purple LRV 2

*Designs marked with a \* have a more linear design whereas the other 13 colour references have an all-over aesthetic.*

**For rail please ensure that FR is clearly noted on all orders**

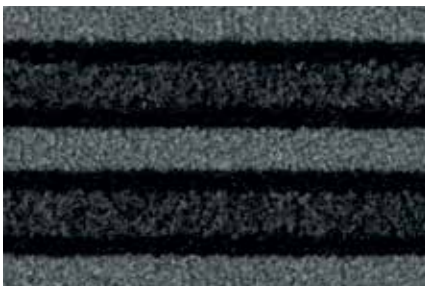
**creating better environments**



## coral® duo FR

First impressions are crucial, which is why effective entrance flooring that stops dirt and moisture being tracked into carriages and saloon areas is fundamental to modern train design.

Coral Duo is the ideal solution when you need maximum dirt removal, unrivalled dirt retention and exceptional moisture absorption, all in just a couple of paces.



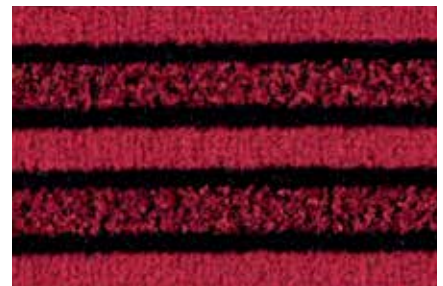
9710FR | luna pearl

LRV 4



9721FR | dark steel

LRV 2



9723FR | African red

LRV 3



9714FR | Sicilian sand

LRV 4



9724FR | cafe supreme

LRV 2



9727FR | Volga blue

LRV 1



9730FR | black diamond

LRV 1



9725FR | cafe bahia

LRV 1

**For rail please ensure that FR is clearly noted on all orders**

## coral® welcome FR

First impressions are crucial, which is why effective entrance flooring that stops dirt and moisture being tracked into carriages and saloon areas is fundamental to modern train design.

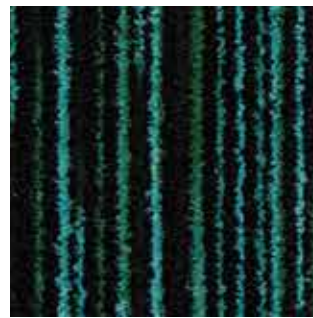
With its contemporary linear design and rich, deep pile, Coral Welcome packs the style and aesthetic appeal of a luxury carpet and makes an unequivocal statement in any entrance area.



3201FR | silver shadow LRV 3



3202FR | desperado LRV 2



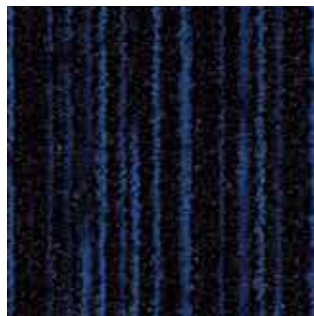
3205FR | blue lagoon LRV 3



3206FR | volcano LRV 1



3210FR | black magic LRV 2



3207FR | blue velvet LRV 1



3208FR | matrix LRV 2



3219FR | colour purple LRV 1

**For rail please ensure that FR is clearly noted on all orders**